

SIGMA

BF  
CAMERA

SIGMA

BF  
CAMERA



# SIGMA BF: THE BEAUTY OF A SIMPLE THING

1

With the Sigma BF, we present an uncompromising new vision for the digital camera. Stripped to the essence but packed with power, innovative yet rooted in the origins of photography, it is designed to accompany you throughout your day and to capture the spontaneous beauty of everyday life. The BF balances performance with simplicity and returns the focus to what matters most: your photographs.

# TRANSITIONAL STATES

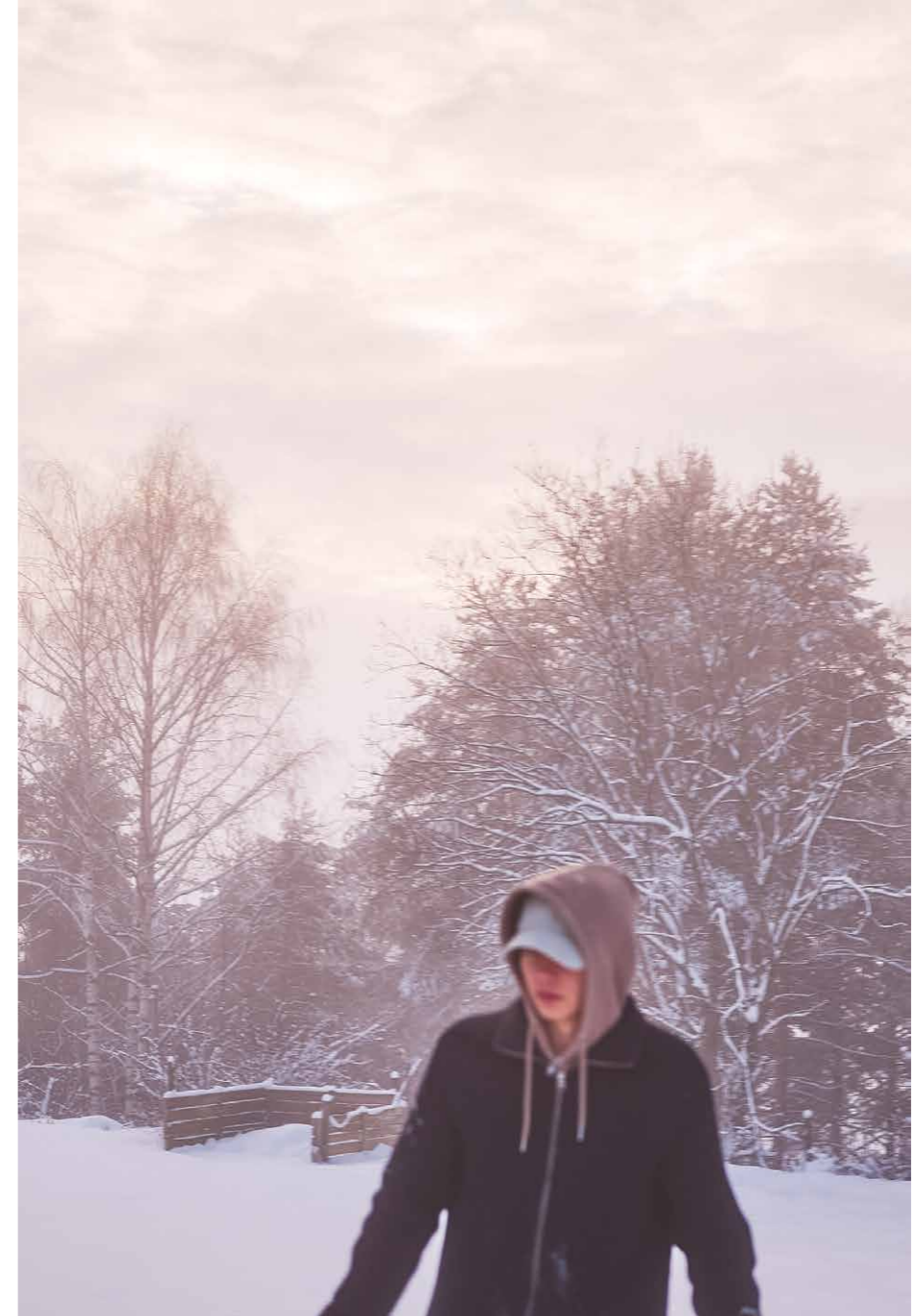
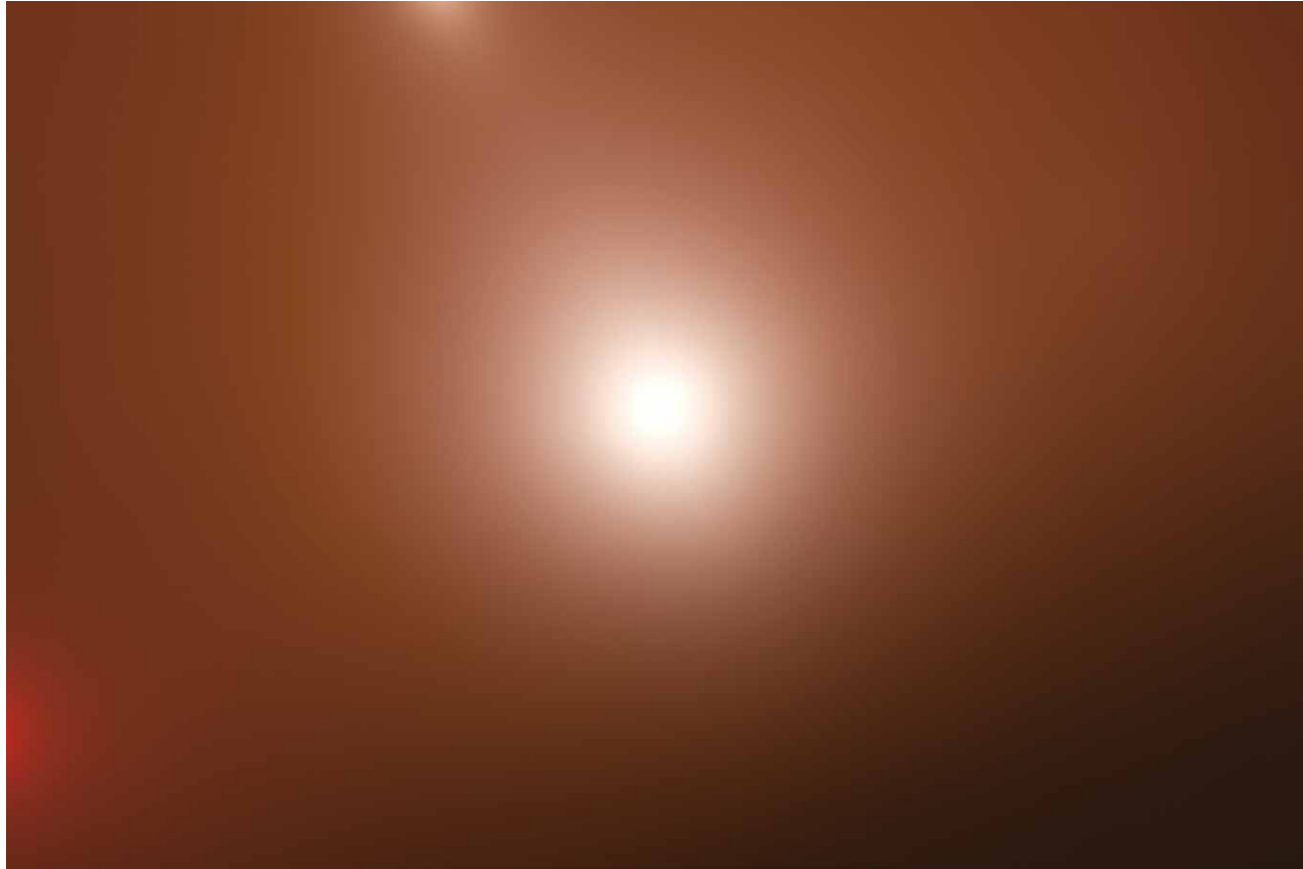
Photographed with the Sigma BF  
by Ola Rindal

3

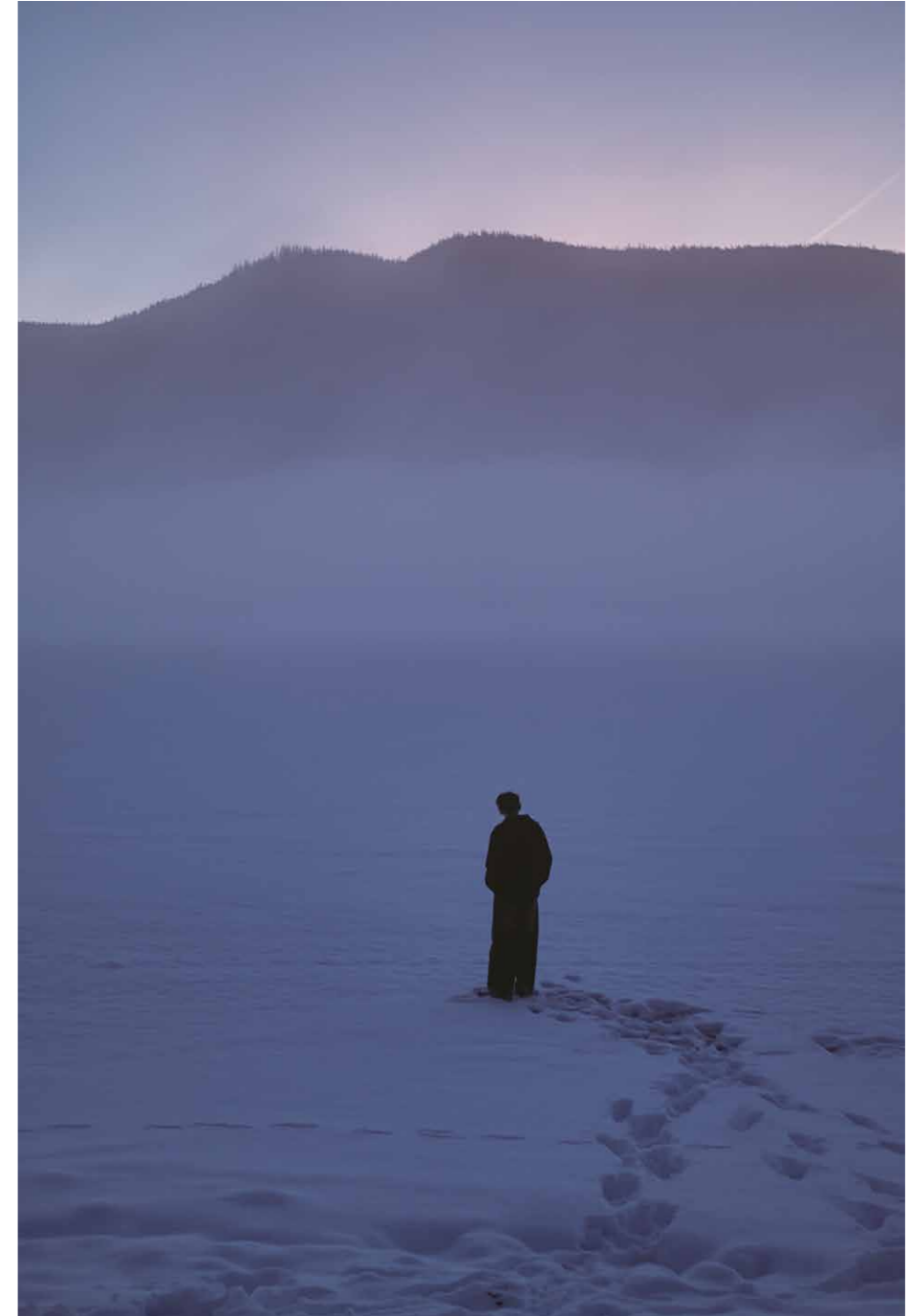
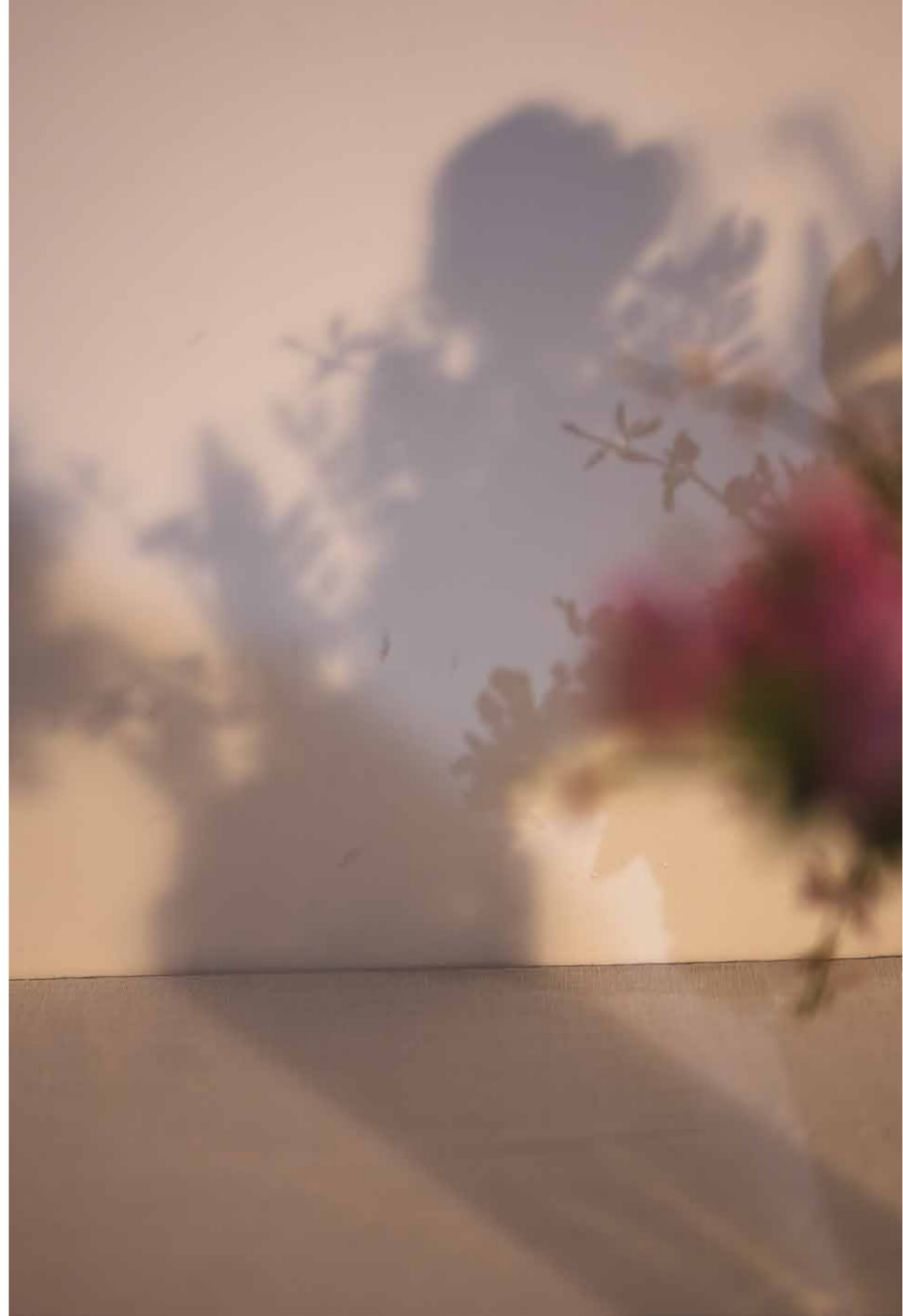
In Ola Rindal's photographs, things seem perpetually on the verge of slipping away. Through his raw yet nuanced aesthetic, a poetry of the everyday emerges, infused with understated melancholy.

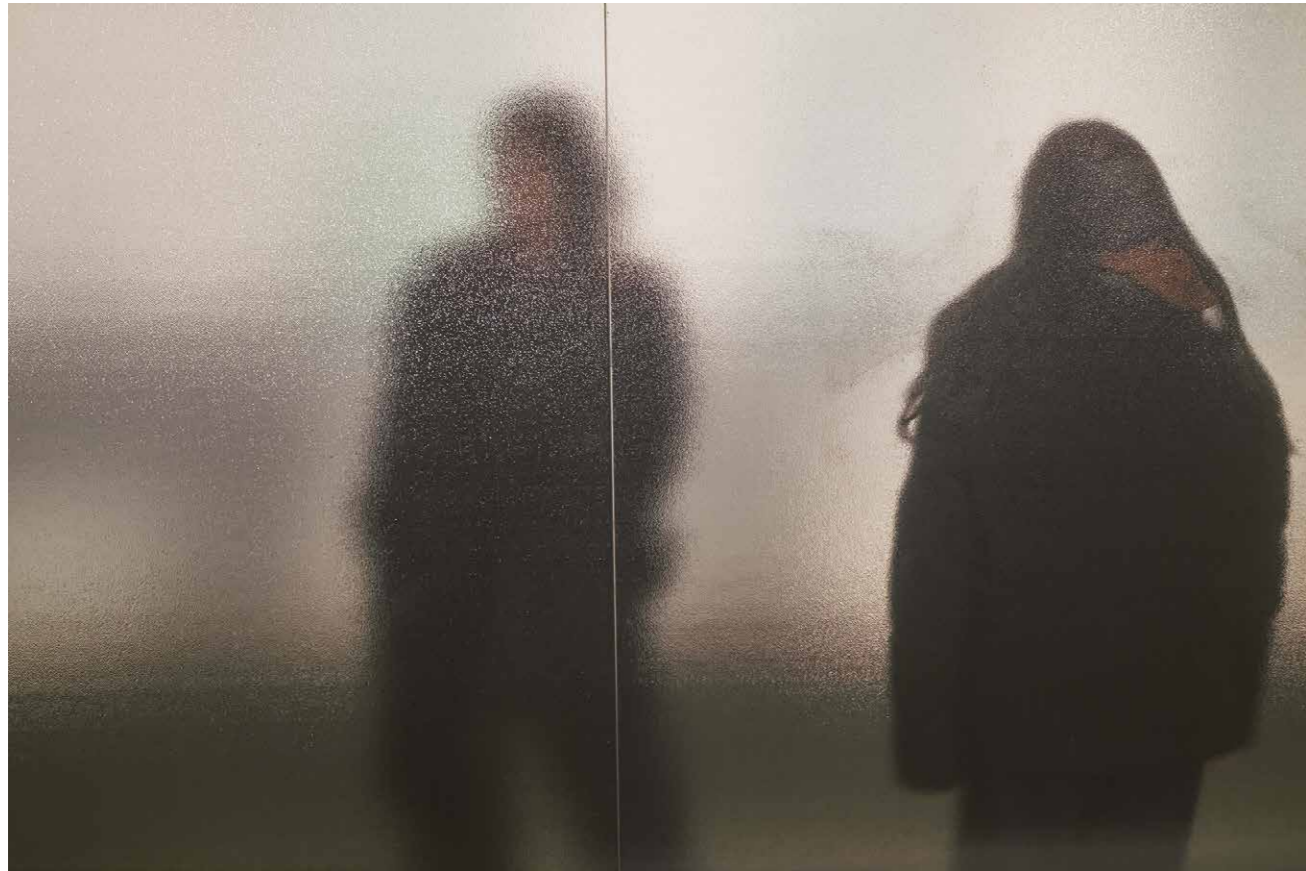
We invited Ola to photograph moments that go unnoticed unless one pays attention. In December 2024, while traveling between Paris, where he lives, and Norway, where he was born, he captured people and objects in states of transition.

Ola's images may seem unintentional, almost accidental. But upon closer inspection, they reveal an artist in full command of his craft and intention. In the fleeting and coincidental nature of everyday life, he uncovers hidden moments and transforms them into images of sublime beauty.

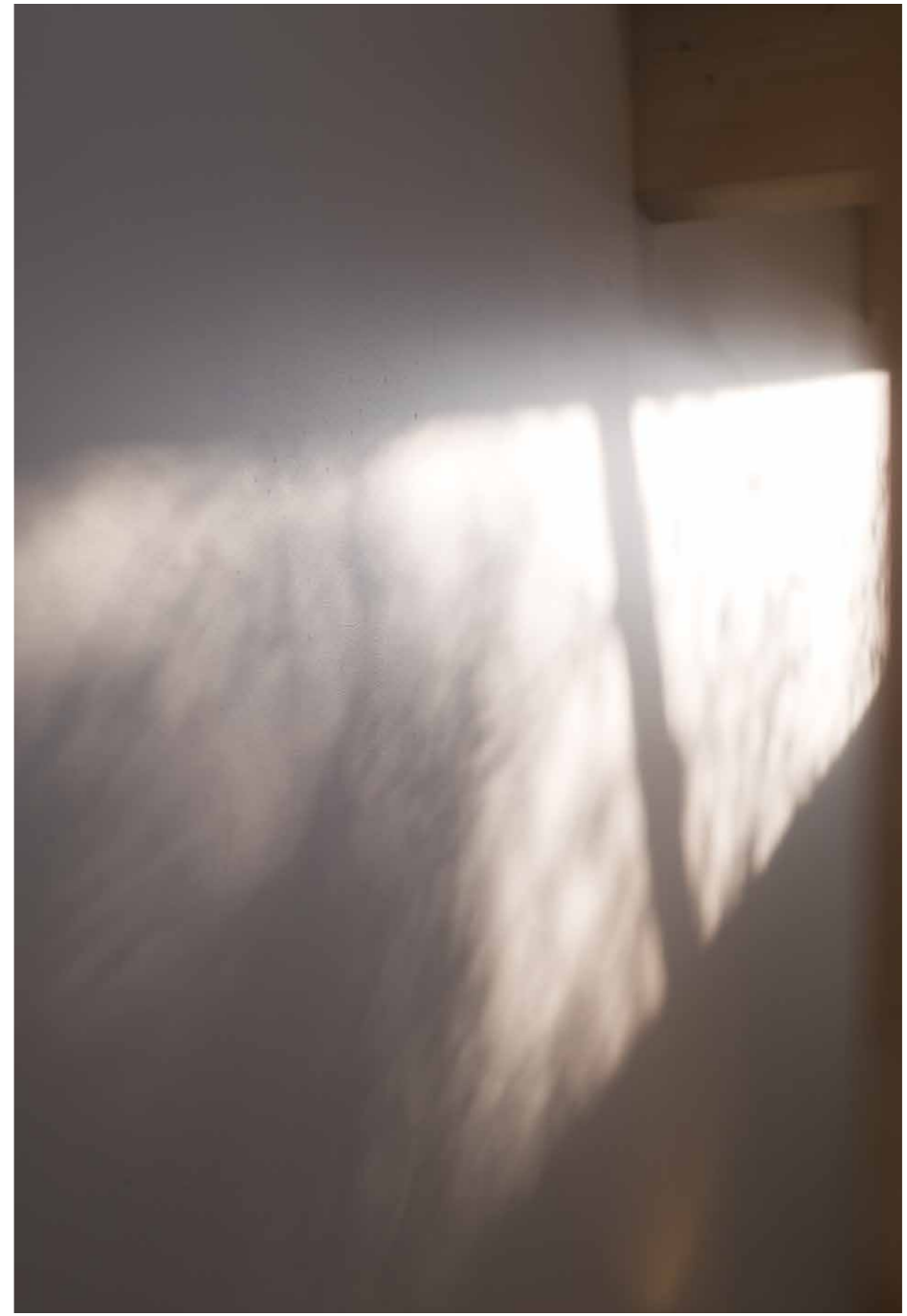
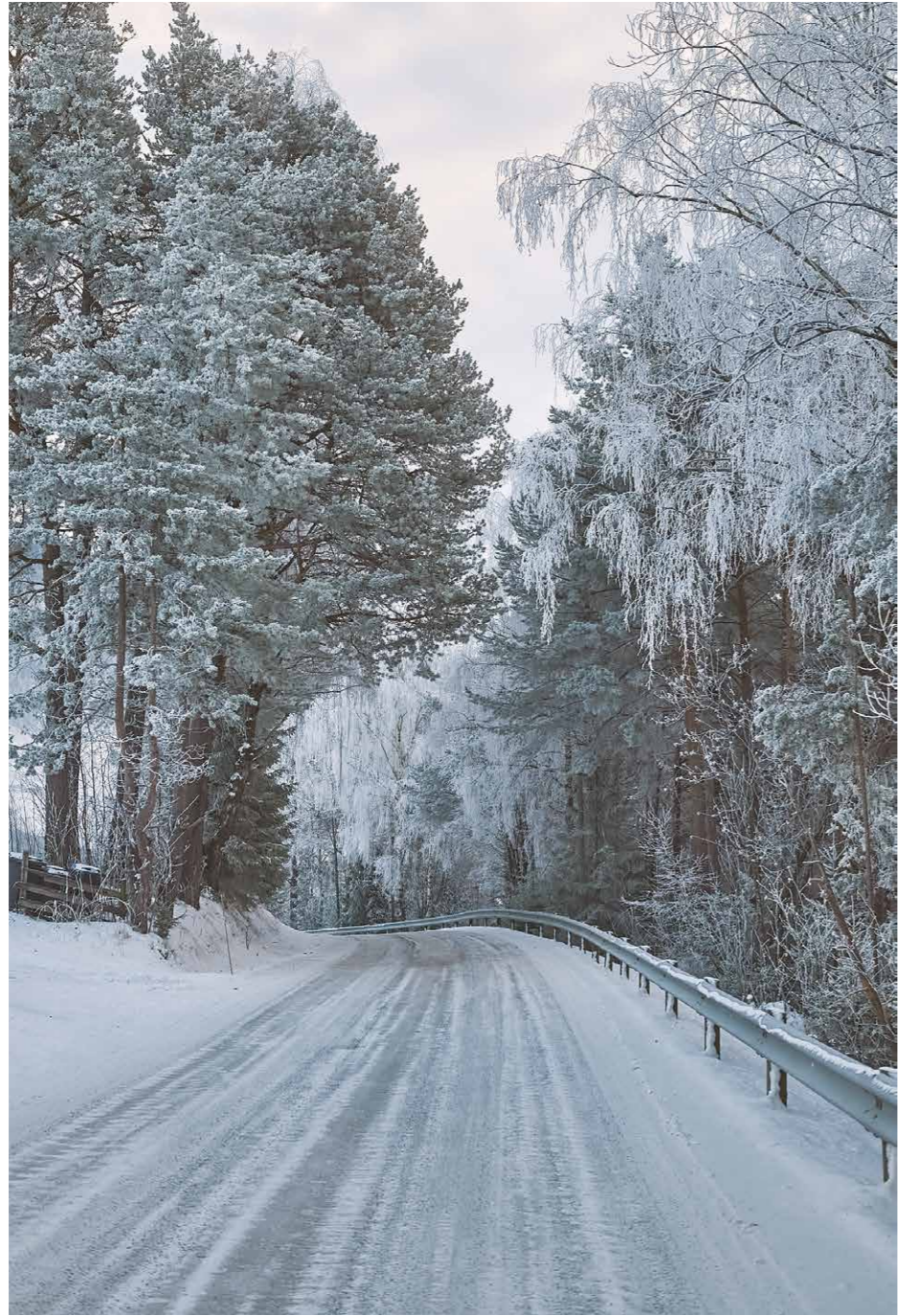
















**Radical simplicity**

The Sigma BF's most important feature is its simplicity. We wanted to create the easiest camera to use, inspired by the humble beginnings of the camera obscura. While the lens remains the soul of photography, the camera still profoundly shapes the images you take – directly, indirectly, even subconsciously. Without compromising on features or performance, the BF's design cuts out everything that distracts from your interaction with the image. From its aluminum unibody to its simplified controls and streamlined menu, the BF embodies a pure photographic experience free of frustration.



**Enduring form**

The Sigma BF is designed to last. It is the first camera in history\* to feature a true unibody, with each camera carved from a single, solid block of aluminum ingot over the course of seven hours. The weight of its seamless all-metal body harmonizes perfectly with any attached lens, while its shape, button placement and precision-cut front texture guarantee secure handling.

\*As of February, 2025 by Sigma.



**Seamless interaction**

The Sigma BF represents a new, more intuitive way to use a camera. It is streamlined to make the act of photography as effortless as possible. We have replaced the shooting mode dial – itself a holdover from the days of film photography – with direct access to the five elements that decide the photograph. Shutter speed, Aperture, ISO, EV compensation and Color mode are all immediately available at the touch of a finger. The new Status Monitor displays the currently active setting, so the screen provides an unobstructed view of the subject.

# IN AMERICA

Photographed with the Sigma BF  
by Fumi Nagasaka

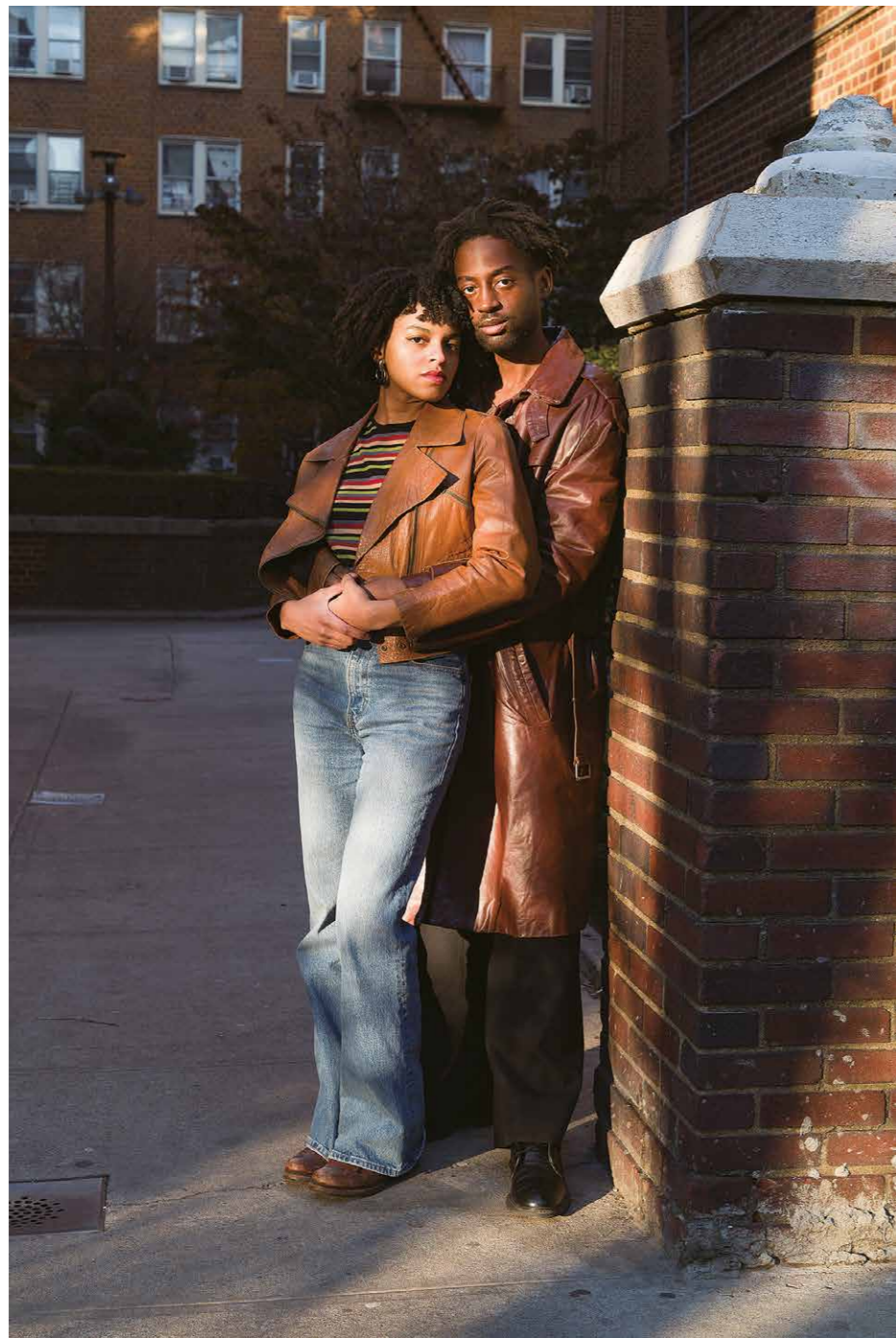
23

For Japanese-born, New York-based artist Fumi Nagasaka, photography is a tool for connection. Through images driven by curiosity and empathy, she offers intimate portrayals of the people she meets and the moments she experiences during her travels.

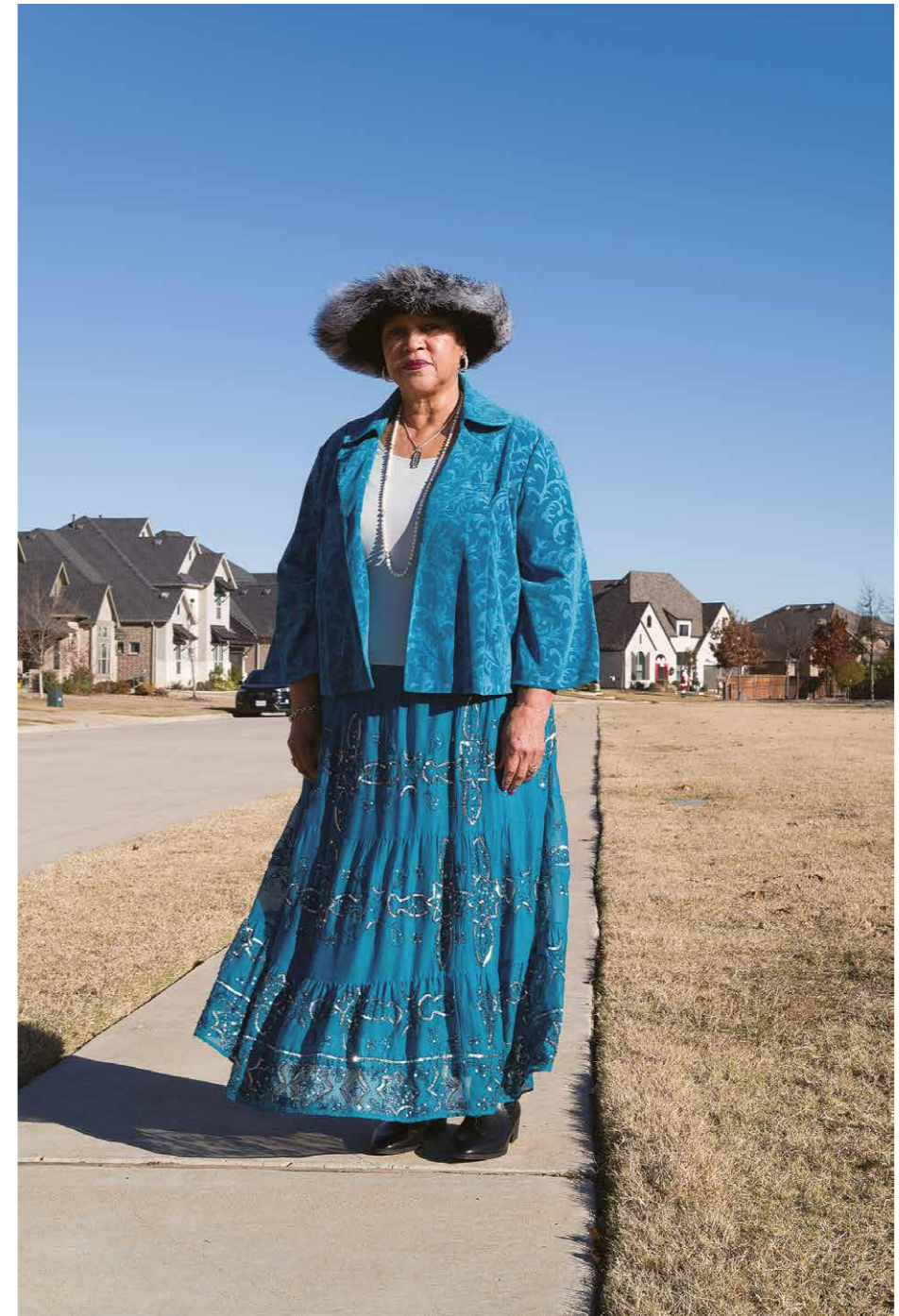
As a Japanese artist now living in America, Fumi photographs with the fresh perspective of an outsider. Her projects often span years as she immerses herself in communities that capture her interest. *Untitled Youth* (2016), *Teenage Riot* (2018), *Marching Wolves* (2022), and other photobooks reflect her desire to capture her subjects on a deeper level.

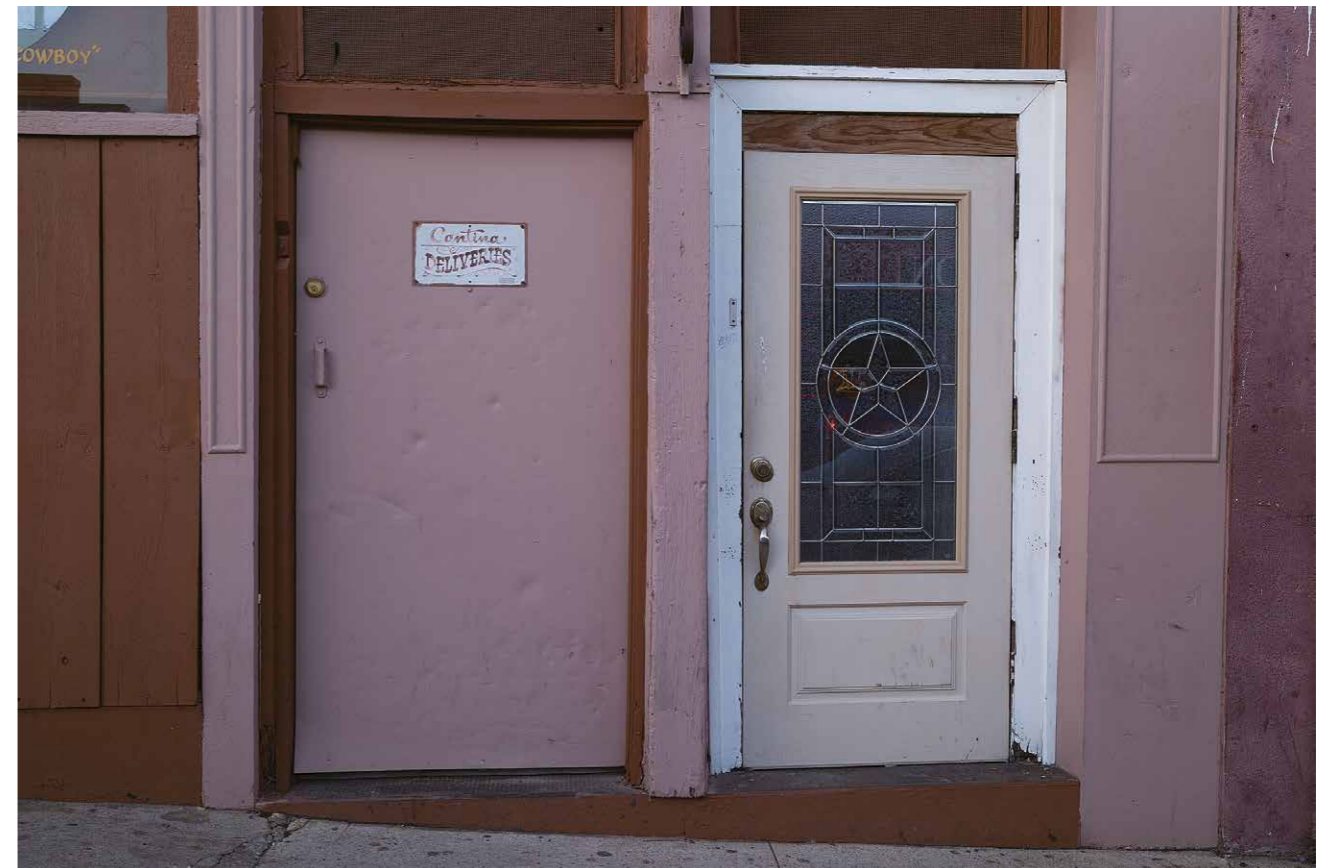
The images presented here are part of an ongoing project that captures everyday life in America. Taken in New York and Texas in December 2024, they depict tender moments of intimacy and connection and express Fumi's compassionate approach to photography.













**Sigma BF SPECIFICATIONS**

TYPE	Type	Interchangeable-lens mirrorless type digital camera	
	Memory media	Internal memory (approx. 230GB), USB storage (for backup)	
	Lens mount	L-Mount	
IMAGE SENSOR	Type	35 mm full-frame (35.9 mm × 23.9 mm) back-illuminated CMOS sensor	
	Camera effective pixels / Total pixels	Approx. 24.6MP / Approx. 25.3MP	
	Aspect ratio	3:2	
	Still image file format	Lossless compression RAW (DNG) 14-bit / JPEG (Exif3.0), RAW (DNG) + JPEG: recording is possible	
	Image aspect ratio	[21:9], [16:9], [3:2], [A Size], [4:3], [6×7], [1:1]	
FILE SIZE	RAW	6016 × 4012	
	JPEG	6016 × 4012	
CROP		3840 × 2560 (Equivalent to approx. 1.5 times the focal length)	
MOVIE RECORDING FORMAT	Movie format	MOV: H.264, H.265, L-Log	
	Audio format	Linear PCM (4ch 48kHz / 16-bit: Max)	
	Recording format / Frame rate	6K* (6K: 6016 × 3384) / 23.98, 25, 29.97 fps *Cannot be used in conjunction with EIS UHD 4K / 23.98, 25, 29.97 fps FHD / 23.98, 25, 29.97, 50, 59.94, 100, 119.88 fps	
	Continuous shooting enable time	2 hours	
FOCUS	AF system / Focus mode	Image plane phase-detection AF + Contrast detection system / Single AF, Continuous AF (with moving object prediction function), Manual focus	
	AF sensitivity range / AF mode	-5 ~ 18EV (F1.4: ISO 100) / 1-Point AF, Area AF, Subject tracking AF (Human + Animal, Human, Animal)	
	AF lock	Half-press the shutter button	
	Other focus functions	AF+MF, MF magnification (full screen, PIP (2× / 4× / 8×)), MF display, Focus peaking, Focus ring control (Non-linear, Linear)	
EXPOSURE CONTROL	Metering system	Evaluative, Spot metering	
	Metering range	-7 ~ 20 EV (50mm F1.4: ISO 100)	
	Still image shooting mode	(P) Program AE, (S) Shutter speed priority AE, (A) Aperture priority AE, (M) Manual	
	Movie image shooting mode	(P) Program AE, (S) Shutter speed priority AE, (A) Aperture priority AE, (M) Manual	
	ISO sensitivity (Recommended exposure value)	Base ISO	[Still] ISO 320 [Movie] MOV: ISO 320, Log: ISO 1250
		Settable range	ISO 100–102400 / Expanded sensitivity ISO 6, 12, 25, 50
	Exposure compensation	±5 EV (in 1/3 stop increments)	
	AE lock	Operated via touch	
	Exposure bracket	3 shots, 5 shots stage exposure ±3 EV (1/3 Step, Standard → Underexposure → Overexposure) (Sequence changeable)	
Exposure assist	Brightness level monitor (Histogram), Zebra pattern, False color		
IMAGE STABILIZATION SYSTEM		Electronic image stabilization (EIS) for video only	
WHITE BALANCE		8 types: (Auto, Auto [Lighting source priority], Incandescent, Fluorescent, Manual [50K steps], Daylight, Overcast, Shade, Flash), Custom 1–10 settings can be added, AWB lock function	
SHUTTER		Electronic shutter	
	Shutter speed	1/25600–30 seconds, Bulb (up to 5 minutes)	
	Self timer	2 sec., 10 sec. (Countdown indicator)	
DRIVE	Drive modes	Single capture, Continuous, Exposure bracketing, Focus bracketing, Interval timer	
	Continuous Drive Speed	Selectable frame rates (3, 5, 8 fps)	
	Number of recordable Frames	JPEG: 1000 frames, DNG: 350 frames	
MONITOR	Type / Coverage	TFT color LCD, Aspect ratio 3:2, 3.15 type, approx. 2.1M dots, Electrostatic capacitance system touch panel / Approx. 100%	
COLOR MODE		13 types: Standard, Rich, Calm, Powder Blue, Warm Gold, Teal and Orange, FOV Classic Blue, FOV Classic Yellow, Forest Green, Sunset Red, Cinema, 709 Look, Monochrome	
OTHER FUNCTION		Save / Load settings, Webcam, In-camera DNG development, Still image capture from recorded movie files, Fill Light (Supports only in-camera DNG development)	
BUILT-IN MICROPHONE / SPEAKER		Stereo microphone / Monaural speaker	
DISPLAY LANGUAGE		English, Simplified Chinese, Traditional Chinese, Danish, Dutch, Finnish, French, German, Italian, Japanese, Korean, Norwegian, Polish, Portuguese, Russian, Spanish, Swedish	
INTERFACE	USB Type-C	USB 10 Gbps (USB 3.2) compatible (Mass storage, UVC, UAC, External video output charging / Power delivery)	
	Remote	Cable release (via USB)	
	External microphone terminal	Supported via USB	
	Headphone output terminal	Supported via USB	

**Sigma BF SPECIFICATIONS**

DUST AND SPLASH RESISTANT STRUCTURE*		Provided *Although this construction allows the lens to be used in light rain, it is not the same as being waterproof.
POWER		Li-ion Battery Pack BP-81
	Number of recordable still images	Approx. 260 images
	Minutes of recordable continuous shooting	Approx. 60 min.
DIMENSIONS AND WEIGHT	Dimensions (W × H × D)	Approx. 130.1 × 72.8 × 36.8 mm / 5.1 × 2.9 × 1.4 in.
	Weight	Approx. 446 g / 15.7oz. (including battery), Approx. 388 g / 13.7oz. (camera body only)
OPERATING ENVIRONMENT	Operating temperature	32 to 104 °F / 0 to +40 °C
	Operating humidity	85% or less (non-condensing)
SUPPLIED ACCESSORIES		Li-ion Battery Pack BP-81
		Metal Body Cap (Black / Silver)
		Start guide
		Limited warranty Warranty sticker
OPTIONAL ACCESSORIES		Cable Release CR-51
		Battery Charger BC-81
		Hand Strap HS-11B
		Hand Strap HS-11G

For more information:





Sigma is a manufacturer of lenses and cameras, founded in Japan in 1961. Our products are developed, engineered, and manufactured at our factory in Aizu, Fukushima, and at our headquarters in Kanagawa.

SIGMA  
AIZU  
JAPAN

